



POST INDICATOR GATE VALVE (PIV)

We Make...

PLUG VALVE
 BALL VALVE
 FORGED VALVE
 CASTING VALVE
 CASTING GATE, GLOBE, CHECK VALVE
 DOUBLE BLOCK & BLEED VALVE
 DUAL CHECK VALVE
 SAFETY VALVE



Your Best Partner of All Valves



STANDARD AND SEVERE SERVICE GATE VALVE
HIGH PERFORMANCE HANDLING UNIT
EASY AND SIMPLE MAINTENANCE

For Oil & Gas, Petrochemical, Power Industries, Water Treatments.



Post Indicator Valves are newly designed & modified by KCL valve to supply...

1. Low Torque for the Gear Handling.
2. Easy and Simple management for maintenance
- 3, Higher Performance while operating.

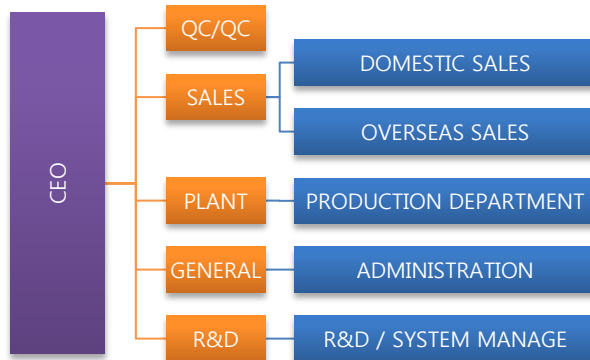
Greetings

KCL Valve is located in South Korea since 2001. We have our own factory and also have huge network resources of valve manufacturing companies in Korea. KCL's main items are Casting and Forged Valves with the range of Ball, Plug, Gate, Globe and Check Valves. We have domestic and overseas partners also to secure the sales capability to local and foreign provinces. For more information, contact to our web site or phone. Thanks.

Factory View



Organization



Certificates Retained

API-6D



ISO9001



API-6FA(DBB All spec.)



API-607(BALL,PLUG)



Registered Authorities

TAKREER



RUWAI FERTIL



SWCC



ADMA / ADCO



NIOEC / NIOC / NIGC



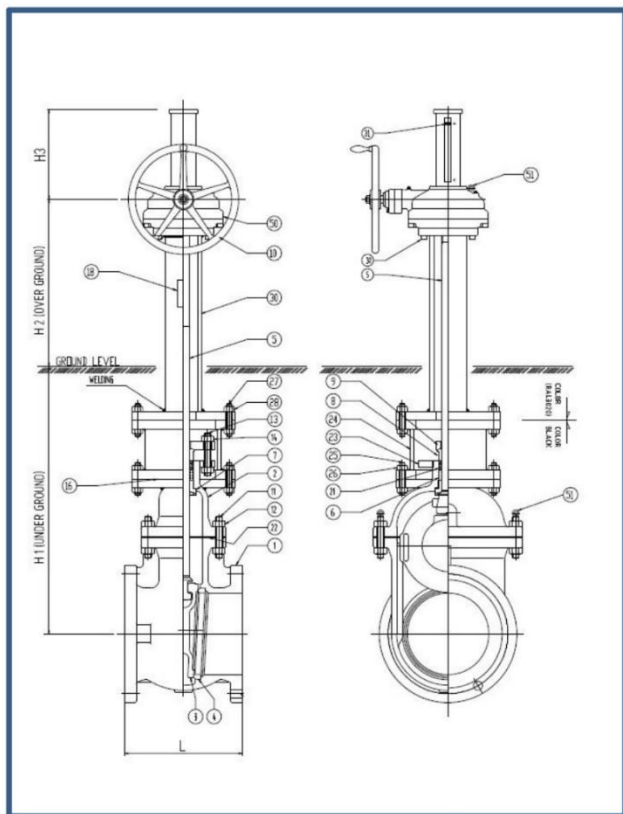
PETRONAS



KCL's POST INDICATOR GATE VALVES



150LB POST INDICATOR VALVE SPECIFICATION



NO.	PART NAME	MATERIAL	Q'TY	REMARK
1	BODY	A216-WCB	1	
2	BONNET	A216-WCB	1	
3	DISC	A216-WCB+STELLITE	1	SURFACE:STELLITE
4	BODY SEAT RING	A105+STELLITE	2	SURFACE:STELLITE
5	STEM	A479-410	1	
6	SPACE	SS410	1	
7	BACK SEAT	SS410	1	
8	GLAND RING	A479-410	1	
9	GLAND FLANGE	A283-D	1	
10	HANDLE	A395	1	
11	BONNET BOLT	A193-B7	1set	
12	BONNET NUT	A194-2H	1set	
13	GLAND BOLT	A193-B7	2	
14	GLAND NUT	A194-2H	2	
16	S/GASKET	GRAPHITE	1	
18	NAME PLATE	A240-T304	1	
21	PACKING	GRAPHITE	1set	
22	GASKET	GRAPHITE	1	
23	BONNET FLANGE	A283-D	1	
24	STUFFING BOX	A53	1	
25	S/BOX BOLT	A193-B7	1set	
26	S/BOX NUT	A194-2H	1set	
27	B/BOX BOLT	A193-B7	1set	
28	B/BOX NUT	A194-2H	1set	
30	TOP SRCTION	A53	1	
31	INDICATOR	PLASTIC	1	
32	GEAR BOX BOLT	A193-B7	1set	
50	GEAR BOX	COMMERCIAL	1	SAMBO
51	Lug Support	COMMERCIAL	2	SAMBO

FEATURES

- For fire hydrant. Easy to check open/close position of the valves.

DIMENSIONS(150LB)

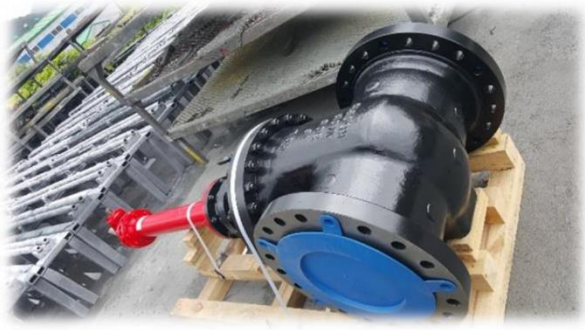
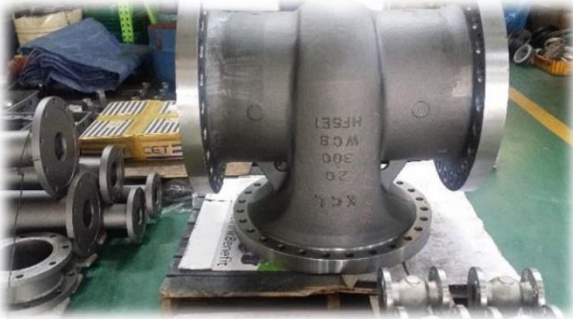
SIZE	ØD	L	H1	H2	H3
4"	229	229	1,000	900	
5"	254	254	1,000	900	
6"	279	267	1,000	900	
8"	343	292	1,000	900	341
10"	406	330	1,000	900	
12"	483	356	1,200	900	542
14"	533	381	1,200	900	
16"	597	406	1,200	900	
18"	635	432	1,200	900	
20"	698	457	1,200	900	
24"	813	508	1,200	900	

SPECIFICATION

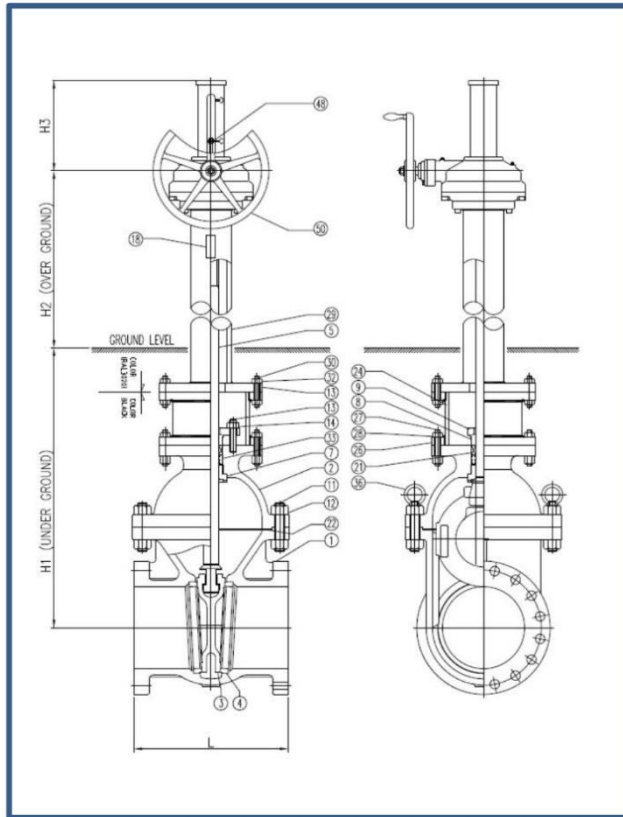
DIAMETER	100A(4") ~ 600A(24")
APPLICABLE PRESSURE	10K ~ 20K 125LB, 150LB, 300LB
CONNECTING ENDS	FLANGE TYPE
TEST METHOD	According to KS B2304, API 598



TEST FACILITY & PRODUCTION SCENE



300LB POST INDICATOR VALVE SPECIFICATION



NO.	PART NAME	MATERIAL	Q'TY	REMARK
1	BODY	A216-WCB	1	
2	BONNET	A216-WCB	1	
3	DISC	A216-WCB+STELLITE	1	STELLITE
4	BODY SEAT RING	A105+STELLITE	2	STELLITE
5	STEM	A479-410	1	
7	BACK SEAT	A479-410	1	
8	GLAND RING	A479-410	1	
9	GLAND FLANGE	A105/A283-D	1	
11	BONNET BOLT	A193-B7	1set	
12	BONNET NUT	A194-2H	1set	
13	GLAND BOLT	A193-B7	2	
14	GLAND NUT	A194-2H	2	
18	NAME PLATE	A240-T304	1	
21	PACKING	GRAPHITE	1set	
22	GASKET	SPW 304+ GRAPHITE	1	
24	STUFFING BOX	A53	1	
26	CONNECT FLANGE	A283-D	1	
27	CONNECT FLANGE BOLT	A193-B7	1set	
28	CONNECT FLANGE NUT	A194-2H	1set	
29	YOKE	A53	1	
30	YOKE BOLT	A193-B7	1set	
31	YOKE NUT	A194-2H	1set	
32	YOKE FLANGE	A283-D	1	
33	SPACER	A479-410	1	
36	Lug Support	COMMERCIAL	2	
48	INDICATOR	PLASTIC	1set	
50	GEAR BOX	COMMERCIAL	1set	SAM BO

DIMENSIONS(300LB)

SIZE	ØD	L	H1	H2	H3
10"	444	457	1,264	900	524
12"	521	502	1,264	900	646
16"	648	838	1,264	900	747
18"	711	914	1,267	900	747
20"	775	991	1,267	900	880



TEST FACILITY & PRODUCTION SCENE



EXPERIENCE GALLERY



MAIN CLIENTS



AGENCIES





Seongju Factory



Head Office

Gimhae Factory



HEAD OFFICE #711, ACE TOWER, 529-1 GOJAN-DONG, DANWON-GU, ANSAN-SI, GYEONGGI-DO, KOREA

TEL : +82 31 405 7327 / FAX : +82 31 405 7328

FACTORY 53, SEONGJUSANEOPDANJI-RO 1-GIL, SEONGJU-EUP, SEONGJU-GUN, GYEONGSANGBUK-DO, KOREA

TEL : +82 54 931 7327 / FAX : +82 54 931 7328

Your Best Choice of All Valves